

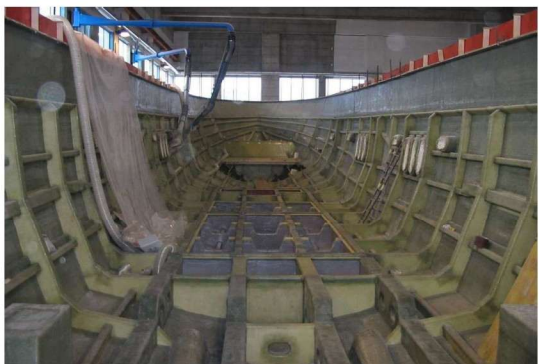
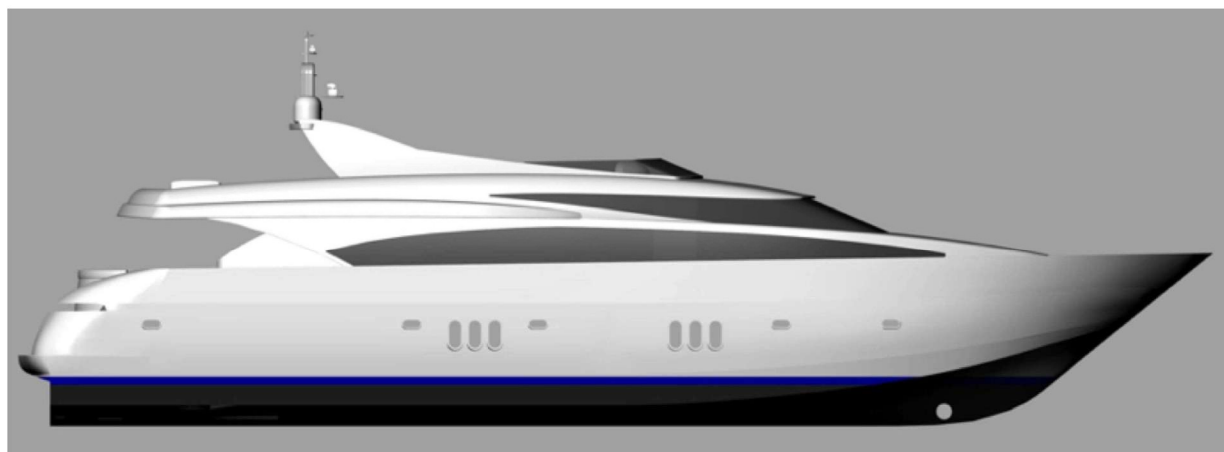
M/Y 30 M

CARATTERISTICHE PRINCIPALI

Materiale di costruzione:
 vetroresina
 LOA = 30.0 m
 Bmax = 6.5 m
 DISW = 85 t
 Tipo: nave a motore planante
 Velocità massima: 30 nodi
 Velocità di crociera: 27 nodi
 Motorizzazione: 2 x CAT C32
 Registro di classifica: RINA
 Classe: Charter Class short
 range

MAIN PARTICULARS

Building material: fibreglass
 LOA = 30.0 m
 Bmax = 6.5 m
 DISW = 85 t
 Type: planing motoryacht
 Maximum speed: 30 knots
 Cruising speed: 27 knots
 Engines: 2 x CAT C32
 Classification Register: RINA
 Class: Charter Class short
 range



The current status of the Project is reflected on below pictures



Sample exterior dining area



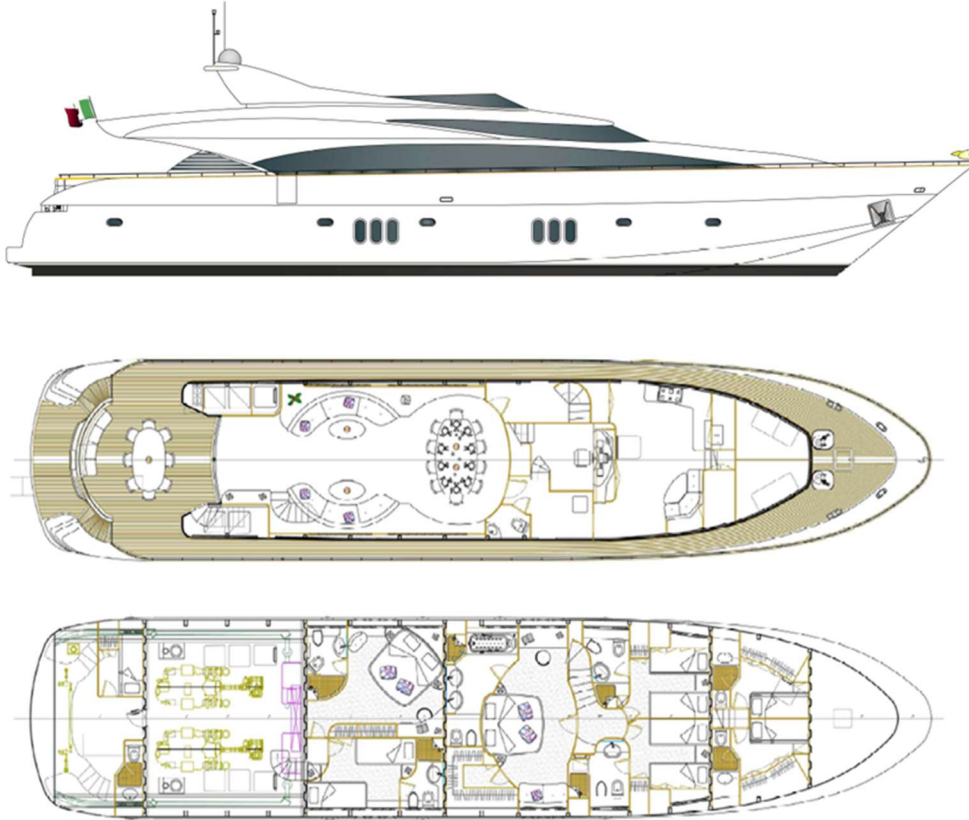


Sample interior main lounge



Sample master bedroom

GRP Hull Project



- **Inspired by the Iconic FERRETTI 880**

This yacht reflects the elegance and performance of the renowned FERRETTI 880, offering an exceptional alternative for connoisseurs of Italian design.

- **Hull Constructed in Genoa, Italy**

The hull was meticulously built in **Genoa**, one of Italy's most respected shipbuilding hubs, known for its deep-rooted maritime tradition and excellence in craftsmanship.

- **Built to RINA Class Standards**

Constructed under the rigorous specifications of **RINA Classification**, ensuring safety, quality, and reliability at sea.

- **Significant Progress Achieved**

Approximately **70% completed below the main deck**, providing a solid foundation for the final stages of customization and outfitting.

- **Completion by GEM Services & Yachting, Greece**

Final construction will be carried out by **GEM Services & Yachting**, experts in yacht craftsmanship.

Their team of internationally recognized naval architects and designers have collaborated with industry leaders such as **Lürssen** and **Blohm+Voss**, bringing unmatched expertise and prestige to every project.

- **Spacious and Elegant Accommodations**

Designed to host up to **10 guests** and **6 crew members** in comfort and privacy.

Guest Cabins: 1 Master Suite, 1 VIP Cabin, and 3 beautifully appointed Twin Cabins

Crew Quarters: 3 double cabins ensuring smooth and discreet service on board

- **Tailored to Your Vision**

Every detail of the yacht's interior and exterior can be customized to reflect your personal style and preferences. The final layout, finishes, and features will be developed in collaboration with the client to create a truly one-of-a-kind vessel.

- **Exclusive Hull Offering**

The **asking price for the hull is €450,000**, presenting a unique opportunity to begin your journey toward a fully bespoke luxury yacht, with completion and outfitting to be quoted separately according to your specifications.