

## FERRETTI 80 RPH



TYPE	FERRETTI 80 RPH	
BUILDER	FERRETTI	
YEAR	2001	
DIMENSIONS	LOA	23,98m (78,675ft)
	Beam	6,00m (19,685ft)
CONSTRUCTION	Hull	GRP
SPEED	Cruising	23 KNOTS
ACCOMMODATION	Guests	4 CABINS/8 GUESTS
	Crew	3
MACHINERY	2 X 1.420 HP CAT	
LYING	ATHENS, GREECE	
PRICE	€760.000 VAT PAID	



2



3



4



5



8



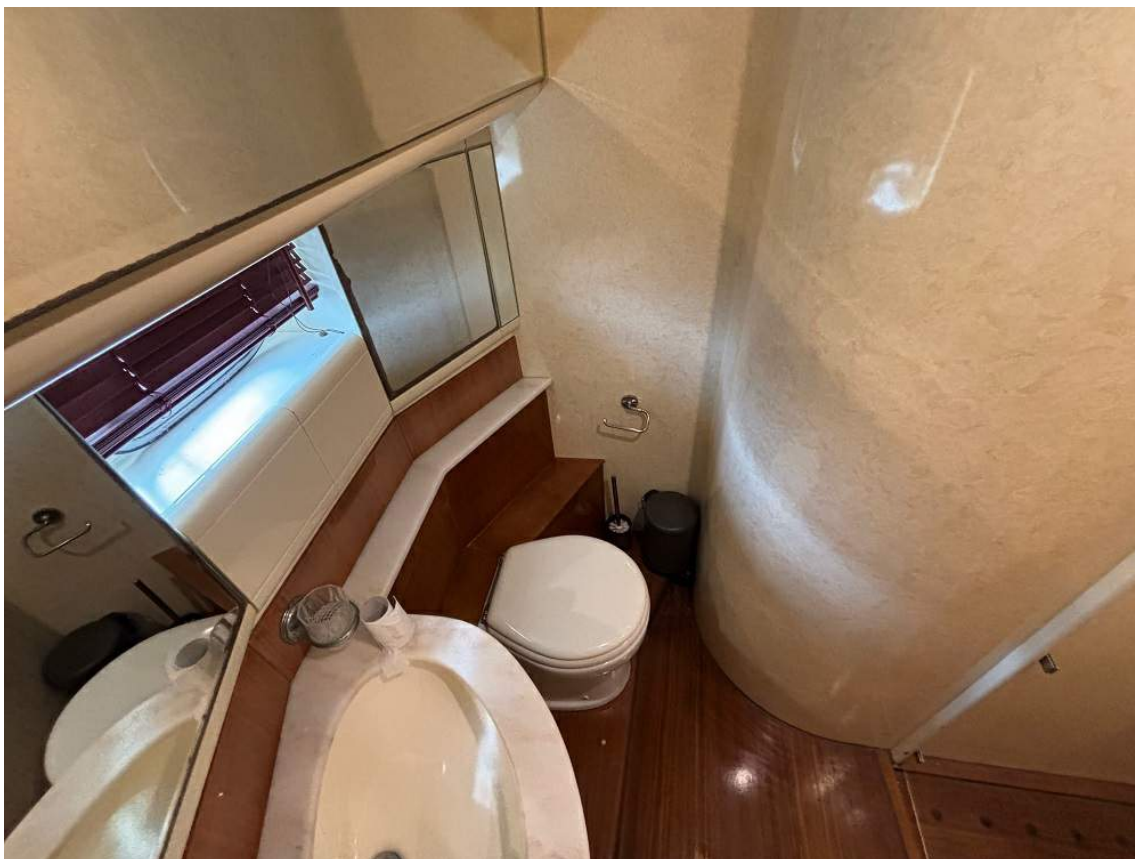
9



10



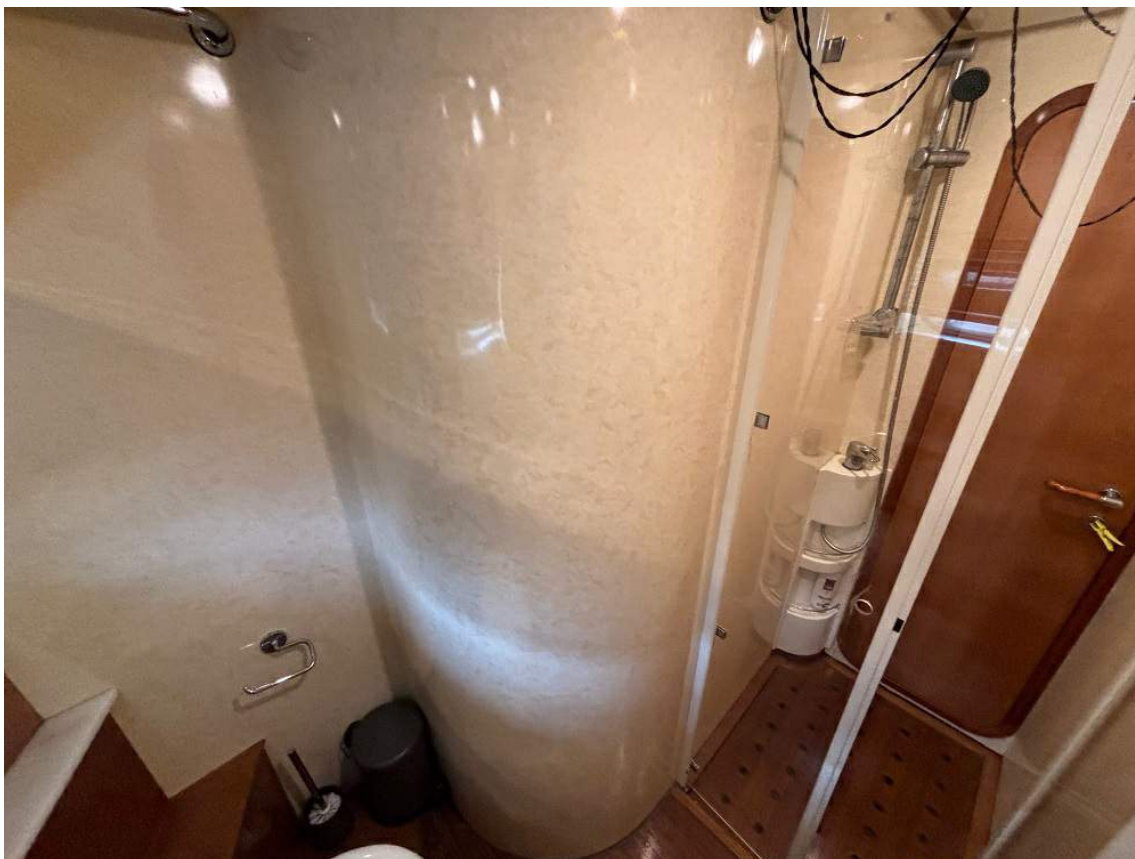
11



12



13



14



15



16



18



20



21



22



23



24



25



26



27



28



29



30



31

# TECHNICAL SPECIFICATION

---

## CONSTRUCTION

---

DECKS	Teak deck on fly
HULL	GRP
SUPERSTRUCTURE	GRP

## MAIN CHARACTERISTICS

---

TYPE	Ferretti 80 RPH
BUILDER	Ferretti
YEAR	2001
L.O.A	23,98 Mtrs/78,67 Ft
BEAM	6 Mtrs/19,68 Ft
DRAFT	2,10 Mtrs/6,59 Ft
FLAG	Malta
GROSS TONNAGE	48,34 Tons
MAX. SPEED	28 Knots
CRUISING SPEED	23 Knots
CONSUMPTION	380 Ltrs/hr
FUEL CAPACITY	7,000 Ltrs
WATER CAPACITY	1,350 Ltrs
BLACK WATER	300 Ltrs
GREY WATER	300 Ltrs

## MACHINERY

---

ENGINES	2 x 1,420 hp CAT
ENGINE HOURS	April 2024 4,650 hrs
GENERATORS	2 x 23 kW Onan (Overhauled 2023)
GENERATOR HOURS	April 2024 Lifetime hours: 7,177 & 6,804
AIR CONDITIONING	AC Condaria in all spaces 3 x Compressors
BATTERIES	24 x 2V Service batteries (2023) 2 x 12V Engine Starter batteries 2 x 12 Generator starter batteries Mastervolt battery charger Mass 24V 100A Battery charger Victron 24V 100A
BOW THRUSTER	Hydraulic
WATERMAKER	2 x Jadomas watermaker 120Ltrs/Hr (3,376hrs & 3,078hrs)

## ACCOMMODATION

---

MASTER CABIN	One Master Cabin with ensuite facilities
VIP CABIN	One VIP Cabin with en suite facilities
GUEST'S CABIN	One Double bed cabin with ensuite facilities One Twin bed cabin with ensuite facilities
CREW CABIN	Two Cabins in three berths
SALOON	Saloon fully refitted
MAIN DECK	Sitting area on main deck can be converted in a small cabin with head

## GALLEY EQUIPMENT

---

COOKER	4 x Ceramic hobs Morris
DISHWASHER	Bosch
FREEZER	1 x Big (Fly)
FRIDGE	1 x Pitsos (Crew Area)
FRIDGE/FREEZER	2 x Small (Cockpit, Flybridge) Full height (Galley)
OVEN	Moris
ICE MAKER	Yes

## COMMUNICATION EQUIPMENT

---

VHF	Simrad RS12 (Bridge) ICOM-M330 (Flybridge)
-----	---

## NAVIGATION EQUIPMENT

---

OTHER EQUIPMENT	Sanshin hr-55 light control (Bridge, Flybridge) Anchor control Quick (Bridge) Standart Radio STR 8400 (Bridge) Raytheon ST60 Tridata (Flybridge)
LOG	Raytheon Tridata
AUTOPILOT	Raytheon ST7000+ (Bridge) Raymarine ST6002 (Flybridge)
COMPASS	Raytheon ST60 (Flybridge)
DEPTHSOUNDER	Raytheon Tridata
GPS-PLOTTER	Navionics Geonav 11C (Bridge) Simrad with CCTV access (Flybridge)
NAVTEX	Receiver JMC
RADAR	Furuno

## ENTERTAINMENT EQUIPMENT

---

TV	1 x TV 40" (Salon/Up and Down) TV (Nav Area)
----	---

## TENDERS & TOYS

---

TENDER	Highfield 420 with 50hp Suzuki outboard and Console (New)
--------	---

## DECK EQUIPMENT

---

OTHER EQUIPMENT	Bow cockpit & fly cushions (New) Covers
ANCHOR	Yes
BIMINI TOP	2 x Bimini Top
DAVITS/CRANES	Besenzoni 400kg
GANGWAY	Besenzoni hydraulic
WINCH	2 x Winches (1xDelta, 1xBruce)
CHAIN	2 x 125 Mtrs 12mm & 105m 8mm

## SAFETY EQUIPMENT

---

LIFE RAFT	Yes
-----------	-----

## REMARKS

---

This Ferretti 800 is a 23m Motor Yacht in good condition built in GRP by Ferretti Yachts S.r.l. in Italy and was delivered in 2001, featuring a planning hull and GRP superstructure, with teak laid decks. She is a comprehensively equipped yacht, powered by twin CAT diesel engines of 1420hp each, she smoothly cruises at 23 knots while is capable to reach a top speed up to 28 knots.

The interior configuration has been designed to comfortably accommodate (8) guests in (4) cabins consisting of a Master suite full beam amidships with king size bed and en-suite bathroom, a VIP suite forward with double bed and en-suite bathroom, a double cabin and a twin cabin with single berths, all with en suite facilities.

Ferretti 800 RPH continuously upgraded to the highest standards.

Key Features:

- Cruising speed of 23 knots
- Sleeps 8 overnight
- Fully refitted salon

---

THE COMPANY OFFERS THE DETAILS OF THIS VESSEL IN GOOD FAITH BUT CANNOT GUARANTEE OR WARRANT THE ACCURACY OF THIS INFORMATION NOR WARRANT THE CONDITION OF THE VESSEL. A BUYER SHOULD INSTRUCT HIS AGENTS, OR HIS SURVEYORS, TO INVESTIGATE SUCH DETAILS AS THE BUYER DESIRES VALIDATED. THIS VESSEL IS OFFERED SUBJECT TO PRIOR SALE, PRICE CHANGE, OR WITHDRAWAL WITHOUT NOTICE.

---